

# AUDCO Plug Valves

## Cast Iron

### Short Pattern - Standard Type

AUDCO Lubricated Taper Plug Valve has been successfully used in a variety of services because of its unique in line maintenance capability. The Plug and Body seating surfaces, which are lapped and matched, are not exposed to the line fluid; this confines corrosion and erosion to less critical areas. Sealing is further enhanced by a specially developed plug sealant charged evenly around the seating surfaces. Plugs are impregnated with a PTFE based anti-friction agent - 'SUPER LoMu' which provides greater wear resistance and ensures low consistent operating torque. SUPER LoMu also enhances resistance to seizure.

#### OPERATION

Short Pattern Lubricated Taper Plug Valves upto 10" are all supplied with square stems suitable for wrench operation (LW Series). Valves 6" to 10" can be offered with Light Duty Gear Units (LO Series). Valves 6" and above can be offered with Heavy Duty Worm Gear Unit (LG Series). Wrenches and Gear Units should be selected as determined by the service conditions, which influence the operating torque. However wrenches should be ordered separately whereas gear units as ordered are installed on the valves and supplied. Valves can also be offered with Carbon Steel Plug (LWS/LOS/LGS Series)

As a standard, Cast Iron Plug Valves are supplied with AUDCO 731 Plug sealant which is suitable for most services other than acid solutions and petroleum products. On request, plug sealant from a wide range offered, can be supplied to suit the nature of service. It is recommended that you consult us before selecting the plug sealant for a new service.

#### END CONNECTIONS

Valves can be offered with flanged ends to the following standards.

Flanged : To match flanges drilled to BS10 Table D and ANSI/ASME B16.1, Class 125.

Drilling to DIN 2532 PN 10 or BS 4504 PN 10 can be offered

Valves can also be offered with undrilled flanges.

Sizes 6" and above have some holes (refer table) tapped on each flange to facilitate fastening of the mating flanges and require studs of same diameter of the bolts which they replace. The tapping is to UNC threads of class 125 & BST 'D' flanges and ISO metric coarse for PN10 flanges.

#### MATERIAL SPECIFICATION

Name of Part	Specification
Body	
Cover & Gland	Cast Iron IS 210 Gr. FG 220
Plug	Cast Iron IS 210 Gr. FG 220 or Carbon steel ASTM A216 Gr. WCB
Bolting	Carbon Steel Studs : BS 970 220 M07 Hex. Screw : ANSI B18.2.1 Hex. Nut : ANSI B18.2.2
Shim	Mild Steel, Nickel Plated
Gland Packing	Rubberised Asbestos
Gasket	Compressed Asbestos

#### CATALOGUE NUMBER

A familiarity with our Catalogue number is not necessary when specifying our Valves.

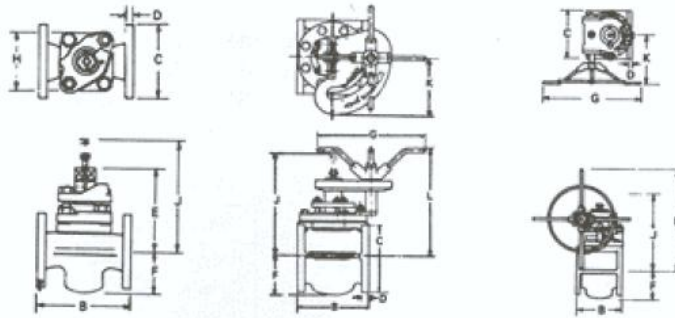
Provide the following details of the valves to our Distributor/Stockist:- Size, Type (Standard, Inverted), Line Fluid, Materials of construction (Body, Plug), Pressure Rating, End Connection, Type of Operation.



## TECHNICAL DATA

Catalogue No.	End Connection	Max C.W.P.		Test Pressure (psig)	
		psig	bar	Body	Seat
LW11/LWS11/LO11/LOS11/LG11/LGS11	Flanged BST 'D'	100	7	225	165
LW13/LWS13/LO13/LOS13/LG13/LGS13	Flanged Class 125	200	14	300	220

Test Pressure for body and seat including duration of test conforms to BS 6755 Part I



## DIMENSIONS (mm)

Size		2" DN50	2.1/2" DN65	3" DN80	4" DN100	6" DN150	8" DN200	10" DN250	12" DN300
Face to Face	<b>B</b>	177.8	190.5	203.2	228.6	266.7	292.1	330.2	355.6
Tapped Hole details per flange	BST 'D'	-	-	-	-	2 x 5/8" 22mm deep	4 x 5/8" 28mm deep	4 x 3/4" 30mm deep	8 x 3/4" 32mm deep
	CL.125	-	-	-	-	2 x 3/4" 22mm deep	2 x 3/4" 28mm deep	2 x 7/8" 30mm deep	2 x 7/8" 32mm deep
Flange diameter	BST 'D'	152.4	165.1	184.2	215.9	279.4*	342.9*	406.4*	482.6*
	CL.125	152.4	177.8	190.5	228.6	279.4	342.9	406.4	482.6
Flange thickness	<b>D</b>	19.1	19.1	19.1	23.9	25.4	28.4	30.2	31.8
C/L to top of plug	<b>E</b>	156	173	202	227	292	327	364	-
C/L to bottom of body	<b>F</b>	71	87	102	114	175	179	219	289
H/W diameter	<b>G</b>	-	-	-	-	578	578	578	578
Max. width	<b>H</b>	105	125	145	152	279	343	381	-
Clearance	LW/LO	213	252	278	318	416	449	483	-
	LG	-	-	-	-	-	486	536	597
C/L to Quadrant/ H/W face	LO	-	-	-	-	229	229	229	-
	LG	-	-	-	-	-	308	308	308
C/L to top of H/W	LO	-	-	-	-	432	457	508	-
	LG	-	-	-	-	-	616	679	718
Wrench No.		4H	5H	6H	7H	10H	10H+	10H+	-
Sealant stick size		B	C	C	D	E	E	E	E

\* These valves have flanges integral with the body and Class 125 diameter.

+ Light duty gear unit is recommended for Valves sizes 8" & 10"